

Upgrading System Firmware of GV-Video Server

GeoVision will periodically release the updated firmware on the website. The new firmware can be simply loaded into the GV-Video Server over the Internet or by using the Video Server Utility included in the Software CD.

- **Upgrading Firmware over Internet**

1. In the Live View window, click the **Show System Menu** button, select **Remote Config**, and then click the **Firmware Upgrade** tab. This dialog box appears.

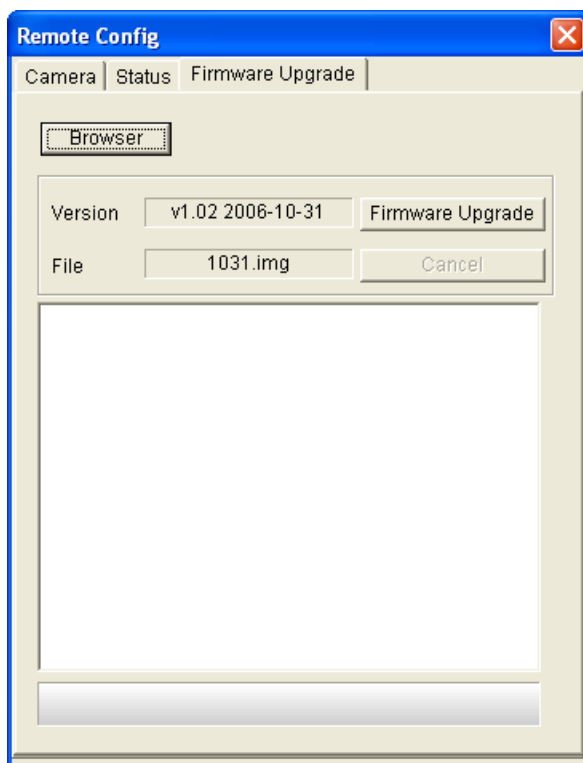


Figure 1

2. Click the **Browser** button to locate the firmware file (.img) saved at your local computer.
3. Click the **Firmware Upgrade** button to process the upgrade.

- **Upgrading Firmware by Using the VS_UTILITY**

The Video Server Utility provides a direct way to upgrade the firmware to multiple GV-Video Servers.

1. Run **Install Utility.exe** from the Software CD.
2. Run **Video Server Utility** which icon is created on your desktop. This dialog box appears.

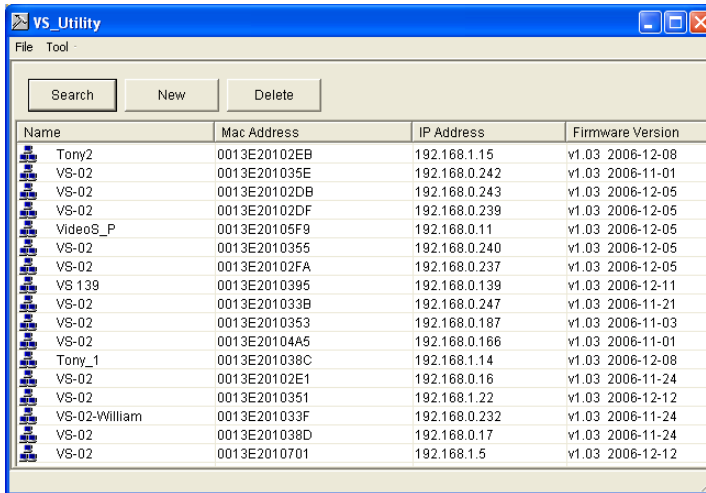


Figure 2

3. Click the **Search** button to locate the available GV-Video Servers on the same LAN. Or click the **New** button and assign the IP address to locate a GV-Video Server over the Internet. Or highlight one GV-Video Server in the list and click the **Delete** button to remove it.
4. Double-click one GV-Video Server in the list. This dialog box appears.

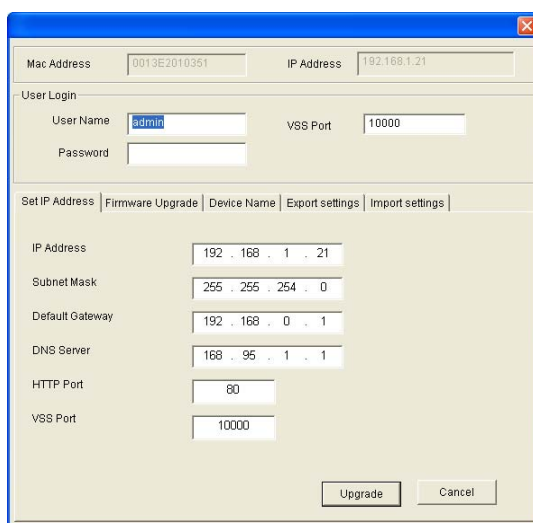
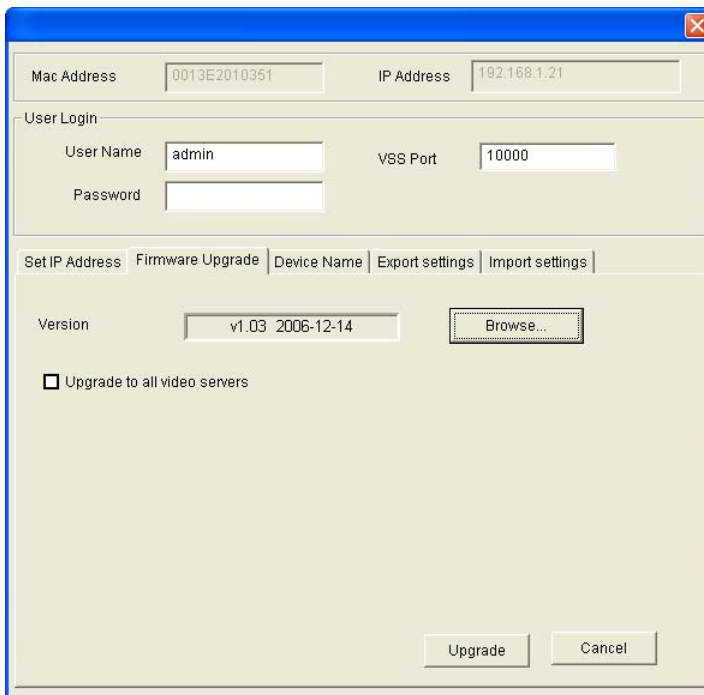


Figure 3

5. Click the **Firmware Upgrade** tab. This dialog box appears.



The screenshot shows a dialog box titled "Firmware Upgrade" with a blue title bar and a close button in the top right corner. The dialog is divided into several sections:

- Mac Address:** A text box containing "0013E2010351".
- IP Address:** A text box containing "192.168.1.21".
- User Login:** A section containing:
 - User Name:** A text box containing "admin".
 - Password:** An empty text box.
 - VSS Port:** A text box containing "10000".
- Navigation Tabs:** A row of tabs: "Set IP Address", "Firmware Upgrade" (selected), "Device Name", "Export settings", and "Import settings".
- Version:** A text box containing "v1.03 2006-12-14" and a "Browse..." button.
- Upgrade Options:** A checkbox labeled "Upgrade to all video servers" which is currently unchecked.
- Buttons:** "Upgrade" and "Cancel" buttons at the bottom right.

Figure 4

6. Click the **Browse** button to locate the firmware file (.img) saved at your local computer.
7. If you like to upgrade all the GV-Video Servers in the list, check **Upgrade all video servers**.
8. Type **Password**, and click **Upgrade** to process the upgrade.