

GV-Hybrid DVR Card

The GV-Hybrid DVR Card supports hardware-based compression, giving you less CPU usage and higher system performance. It features:

- DVD recording quality.
- Support for DVD format files.

The characteristics of GV-Hybrid DVR Card are:

- You can connect up to four GV-Hybrid DVR Cards to one GV-System; one GV-Hybrid DVR Card supports up to four channels.
- The GV-Hybrid DVR Card only affects video recording; all live views are still provided by the GV video capture card.
- For audio recording, the audio inputs of the GV video capture card always have the sequence priority over those of GV-Hybrid DVR Card. For example, GV-800 Card has 4 audio channels, so that the GV-Hybrid DVR Card's audio channels will be from 5 to upwards.
- The GV-Hybrid DVR Card supported channels do not work with these features: Water Mark, Text Overlay and Pre-Rec Motion.

System Requirements

- GV-600, 650, 750, 800, 1000, 1120, 1240 and 1480 Cards
- Version 7.0 or later

Packing List

❶ GV-Hybrid DVR Card x 1	❷ 2-Pin to 5-Pin Audio Cable x 1
❸ Hardware Watchdog Jumper Wire x 1	❹ 40-Pin Ribbon Cable x 1
❺ 5-Pin to 5-Pin Audio Cable x 1	❻ Installation Guide x 1

Connections

Connect the GV-Hybrid DVR Card to the GV video capture card as illustrated below.

Note: Make sure the Ribbon Cables are connected to the correct input and output on the GV-Hybrid DVR Card.

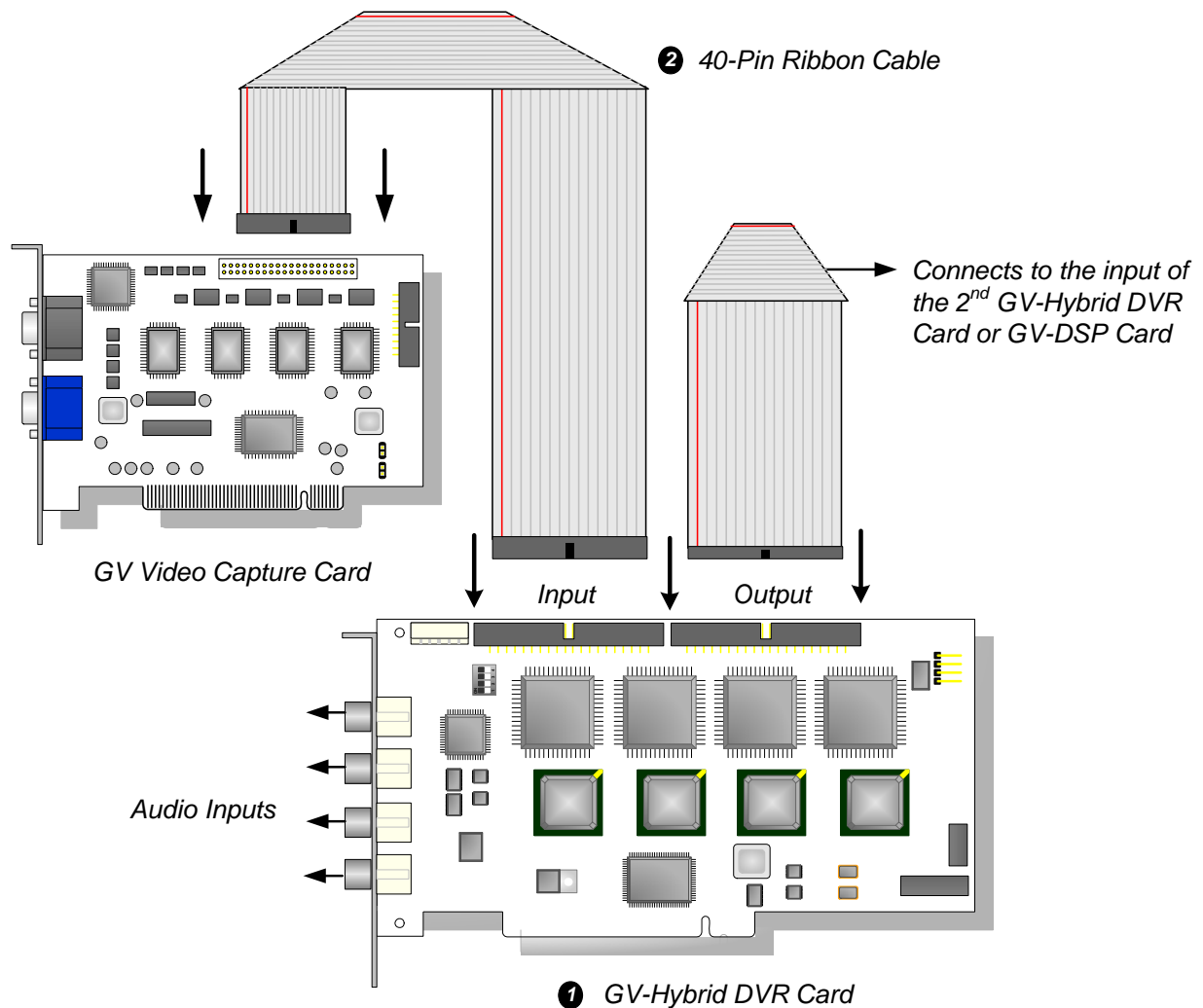
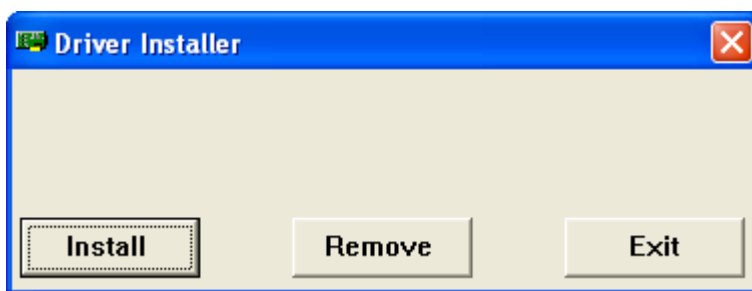


Figure 1 GV-Hybrid DVR Card connections

Installing Drivers

After you install the GV-Hybrid DVR Card to the computer, the Hardware Wizard will automatically detect the device. Ignore the wizard and follow these steps to install drivers:

1. Insert the software CD. It will run automatically and pop up a window.
2. Select **Install or Remove GV-Series Driver**, and then click **Install or Remove GV-Series Cards Driver**. This displays this dialog box.



3. Click **Install** to install the drivers. When the installation is finished, this message will appear: `Install Successfully`.
4. Click **Exit** to close the dialog box.

Note: In Windows XP, the wizard will disappear after the installation is complete. In Windows 2000, close the wizard manually.

To verify the drivers are installed correctly, go to Device Manager. In the DVR-Devices field, you should see 4 entries for **GVMP2** and 11 entries for **GVMP2 Null**, as shown below.

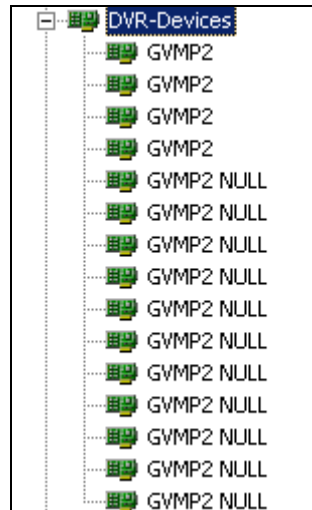


Figure 2 Verifying GV-Hybrid DVR Card’s drivers

Specifications

Interface	40-Pin Connector
Audio Input	RCA Connector x 4
The number of Channels	4
Recording Rate	120 fps (NTSC), 100 fps (PAL)
Video Resolution	NTSC: 720 x 480
	PAL: 720 x 576
Dimensions	180 mm x 102 mm